

TYRE UPRIGHT AND TYRE HEAD ASSEMBLY:

**** PLEASE LOCTITE ALL BOLTS ****

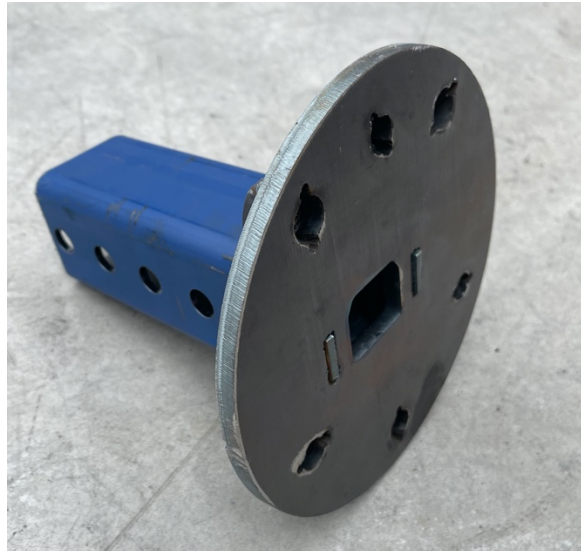
PARTS:

- TYRE UPRIGHT
- TYRE HEAD

HARDWARE:

- **4x m14 30mm bolts** (mounts tyre head to tyre upright).
- **12x m14 washers.**
- **2x m14 110mm bolts** (mounts tyre upright to carrier arm).
- **3x m14x1.5 50mm studs/bolts** (installed in tyre head).
- **3x 12x1.5 40mm studs/bolts** (installed in tyre head).

TYRE HEAD:



TYRE UPRIGHT:



STEP 1:

Mount the tyre upright to the carrier arm. The bottom of the tyre upright has an open 'c' shape that can slide over the top of the carrier arm. The tyre upright should be installed so that it is facing away from the vehicle. There is adjustment for where the upright can be positioned, you will most likely want to adjust the upright as far in-board as possible unless you are running twin 35 inch spares on a narrow vehicle (such as a 70 series).

Bolt the upright to the carrier arm using the 2x 110mm m14 bolts. These should be installed from the bottom with the nut facing upwards. Please use washers on both the nut and bolt head side. Please use loctite.

Bolt locations are shown below (circled in red):



STEP 2:

Slide the tyre head into the top of the tyre upright. Please note that the tyre head has been intentionally welded on a 3-degree angle – this angle is designed to counter the angle of the arm which will result in the tyre sitting square across the back of the vehicle. Please ensure the tyre head is installed the correct orientation, if installed in the incorrect orientation, then the tyre will sit on a large angle. It does not matter if the ‘triangle’ stud pattern is facing upright or upside down, this will change if the tyre head is installed on the driver’s side, passenger side or if the vehicle is 5 stud or 6 stud.

Please bolt the tyre head into the tyre upright using 4x m14 30mm bolts with washers and nuts. Once the spare tyre is installed, you will need to adjust this upright in as far as possible. Please use Loctite.

Please see this step pictured below, the bolt locations have been circled in red:



STEP 3:

Bolt the spare wheel to the tyre head. At this stage you will need to establish whether your vehicle is 5 stud or 6 stud and remove the studs/bolts that you do not require.

6 stud: Keep the m12 bolts installed and remove the m14.

5 stud: Keep the m14 bolts installed and remove the m12.

Depending on the rims that you are running, you may require specific when nuts (some alloy wheels).

Please see this step pictured below:

